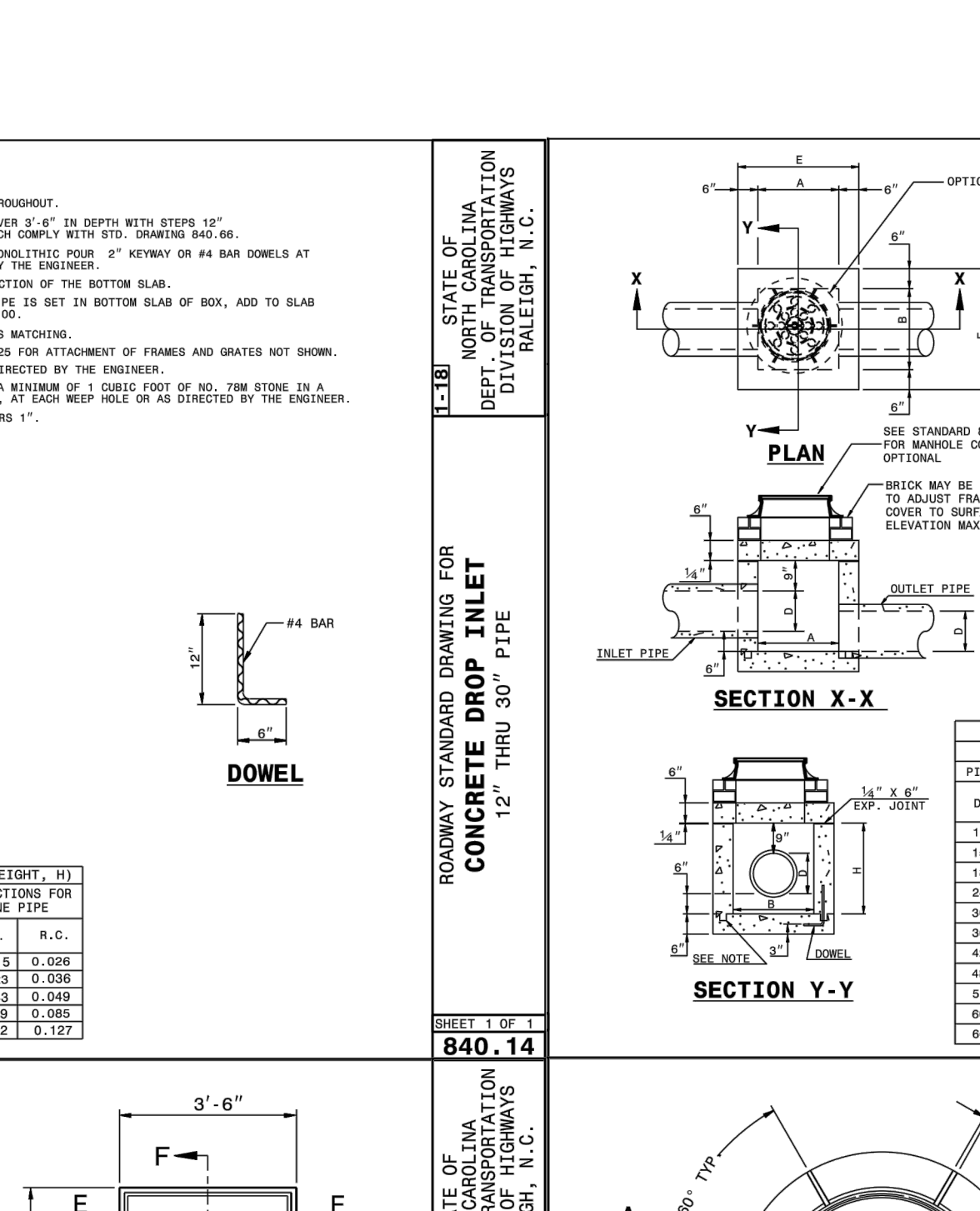
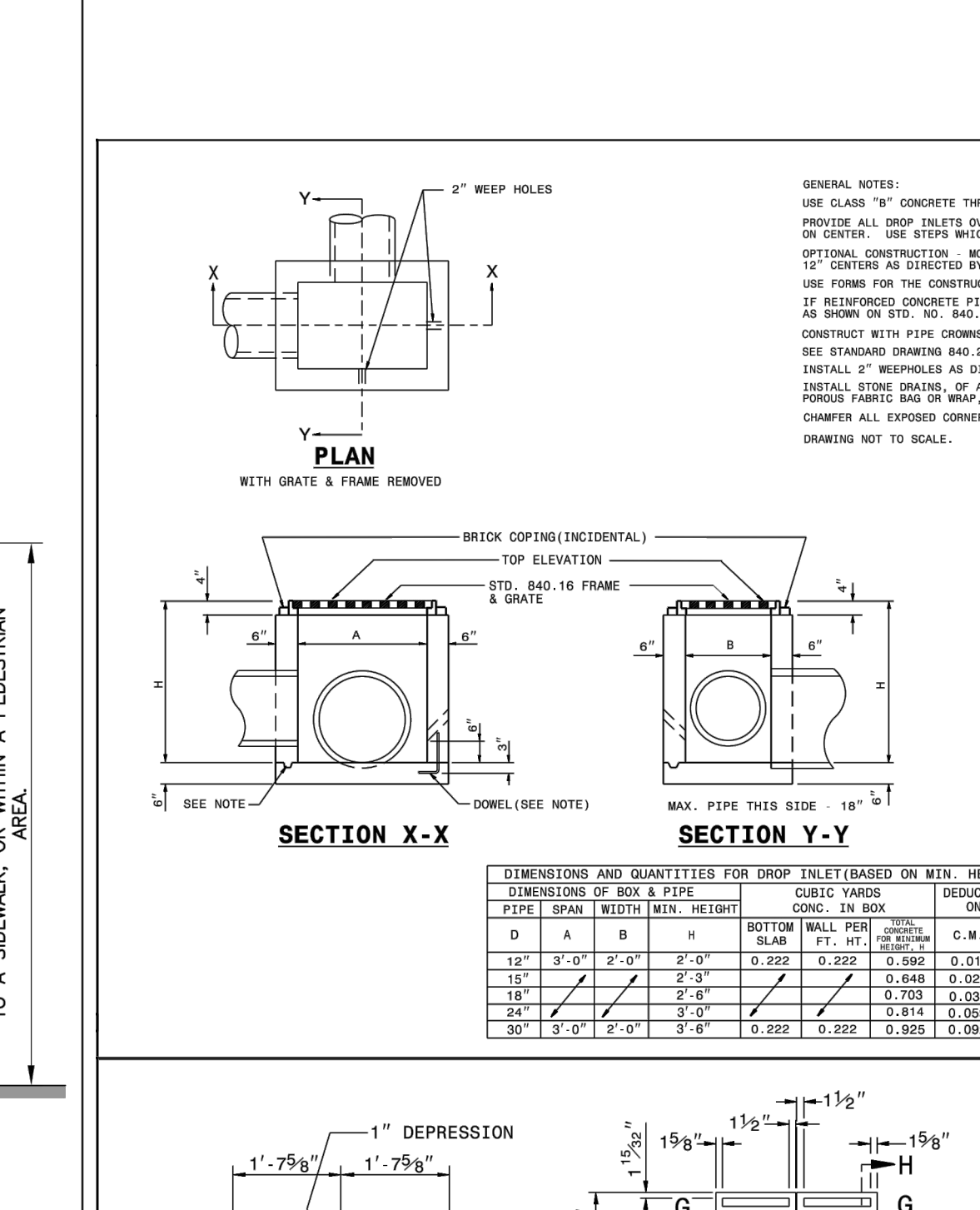
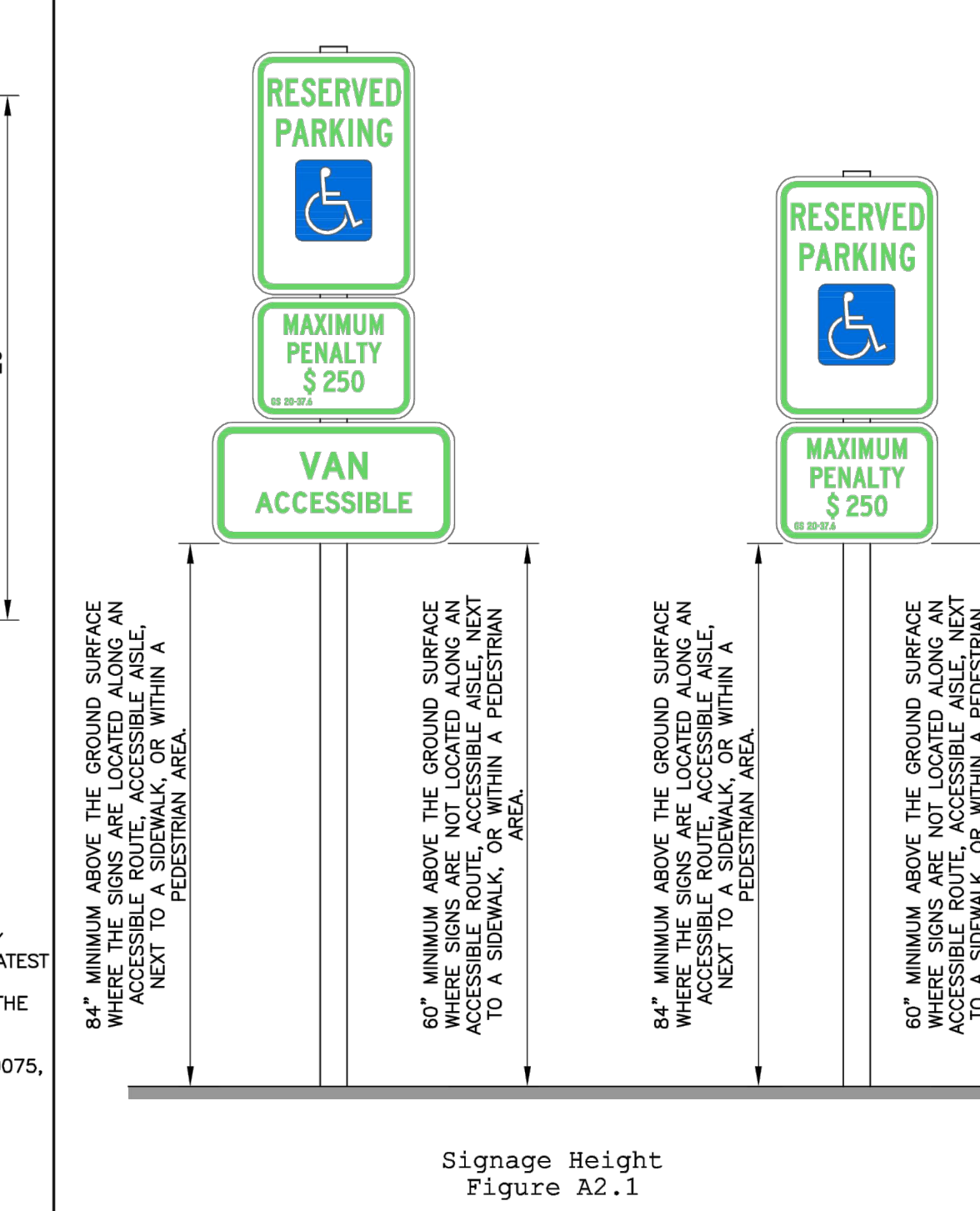
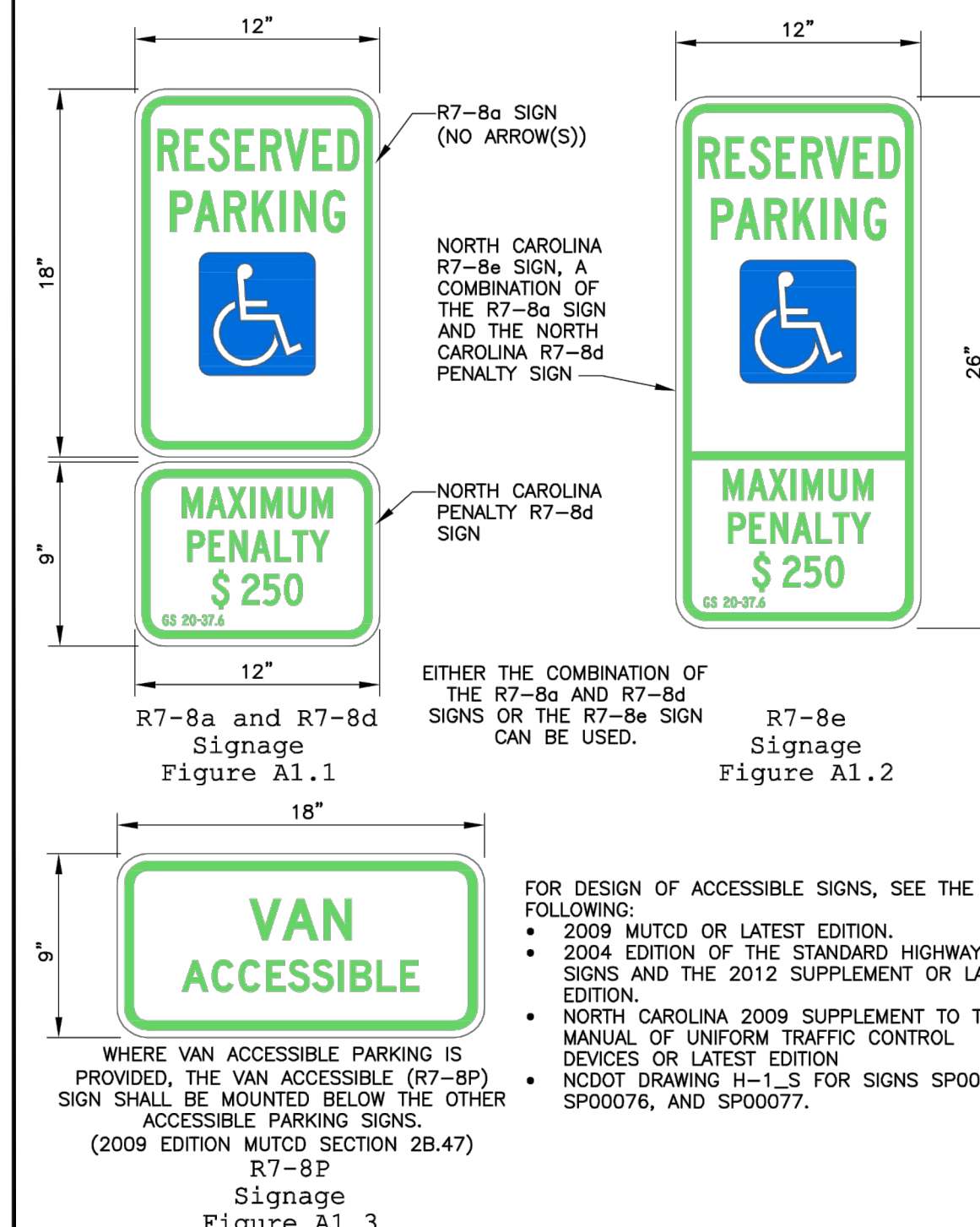


REVISIONS

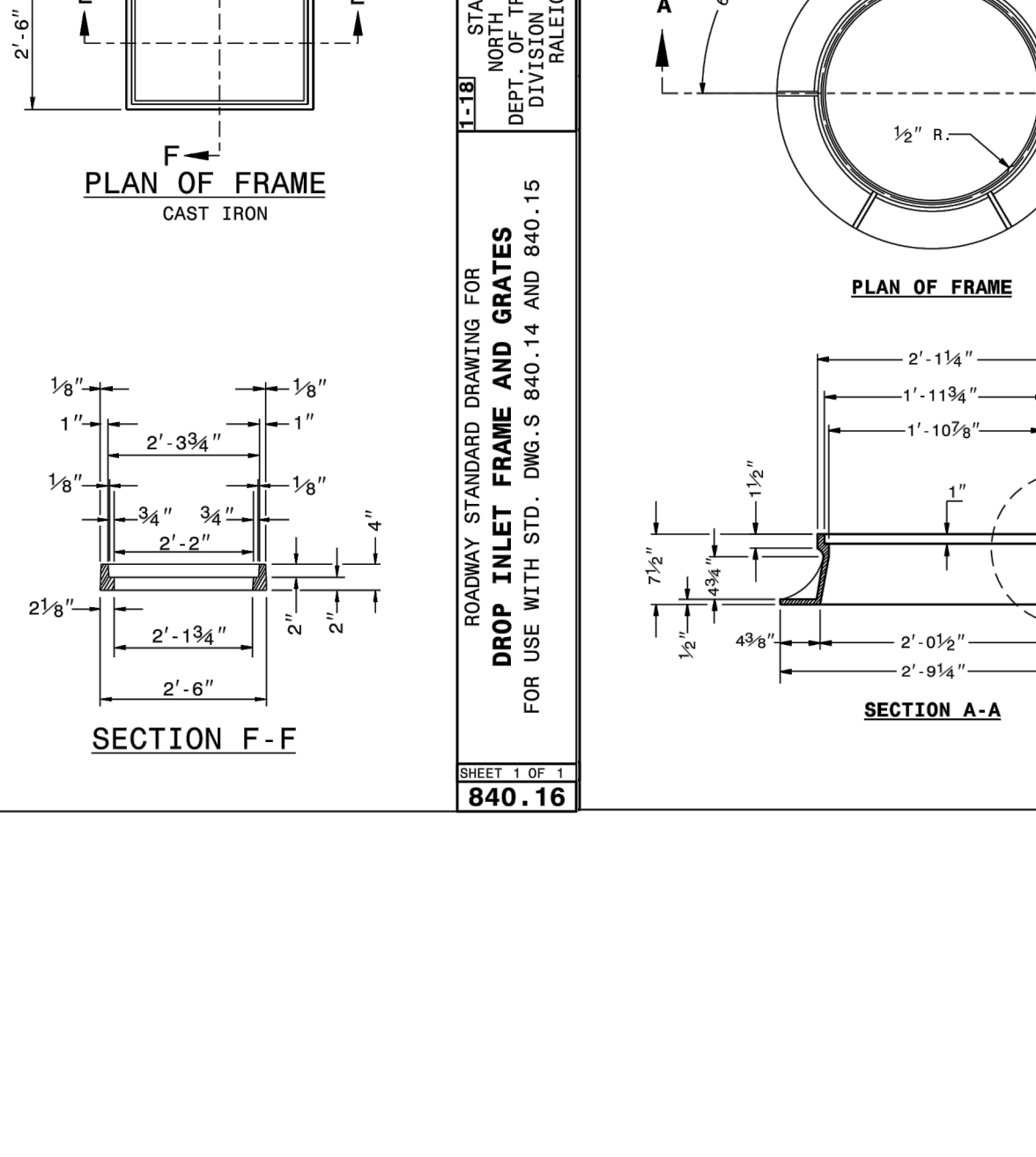
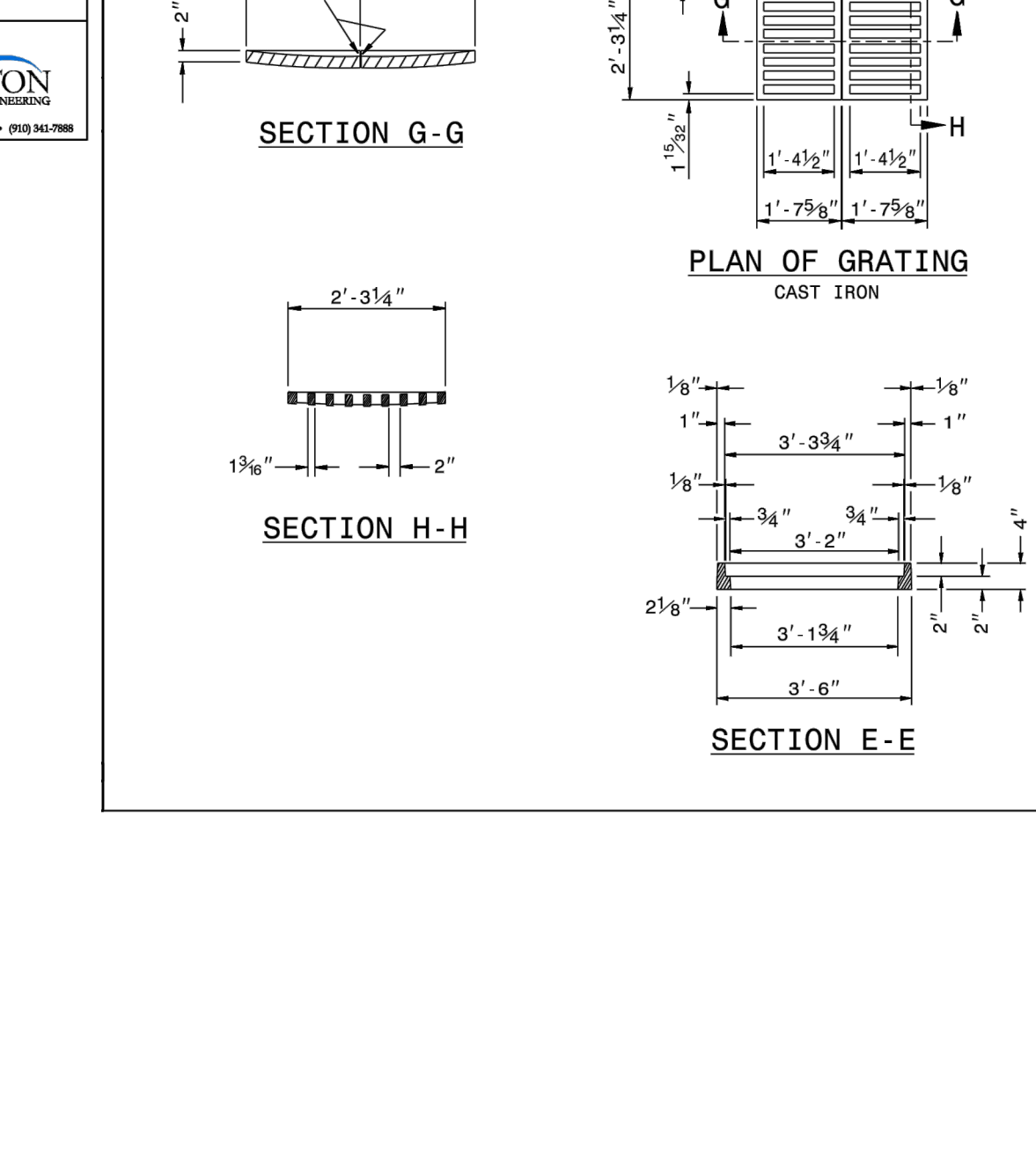
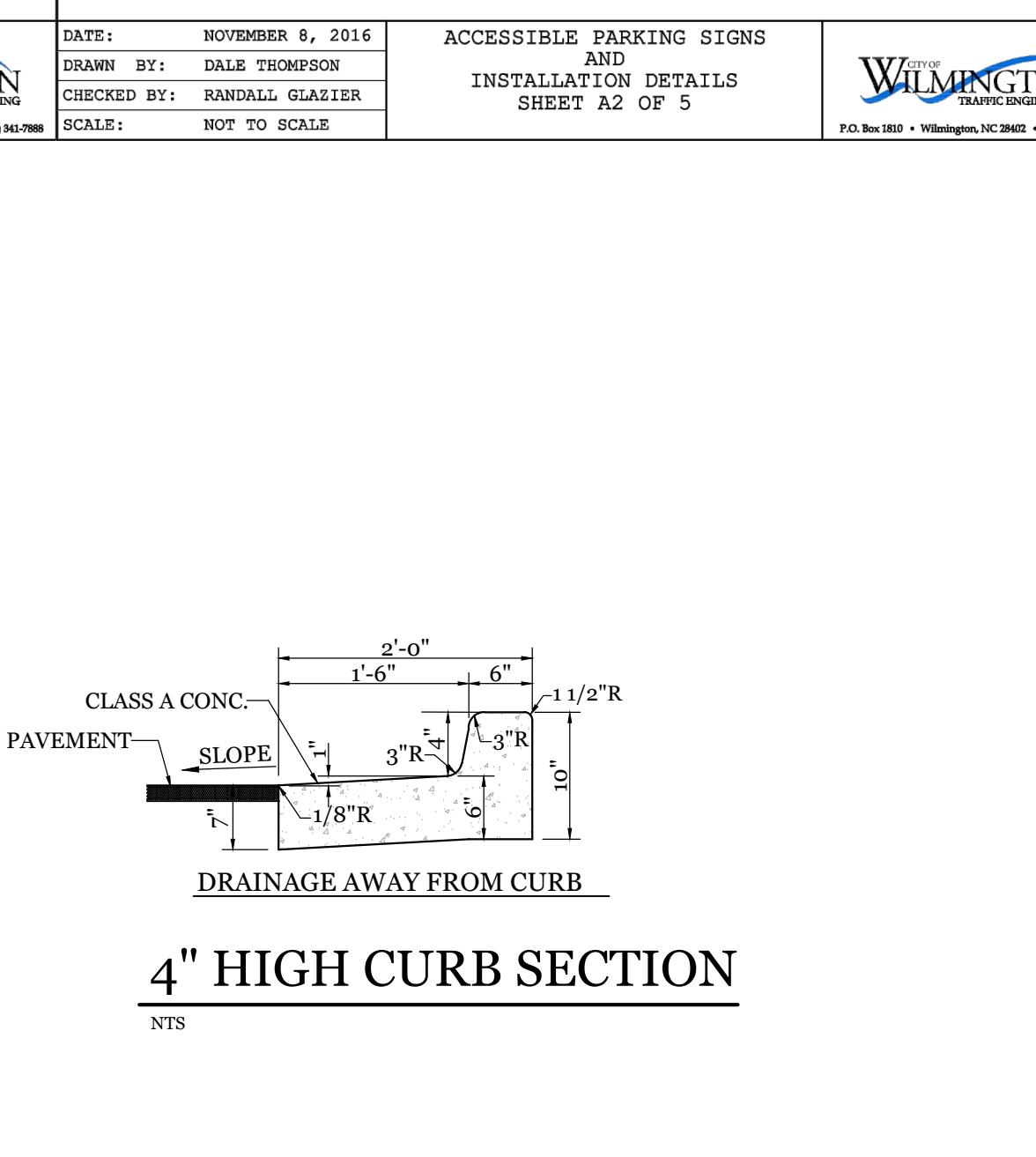
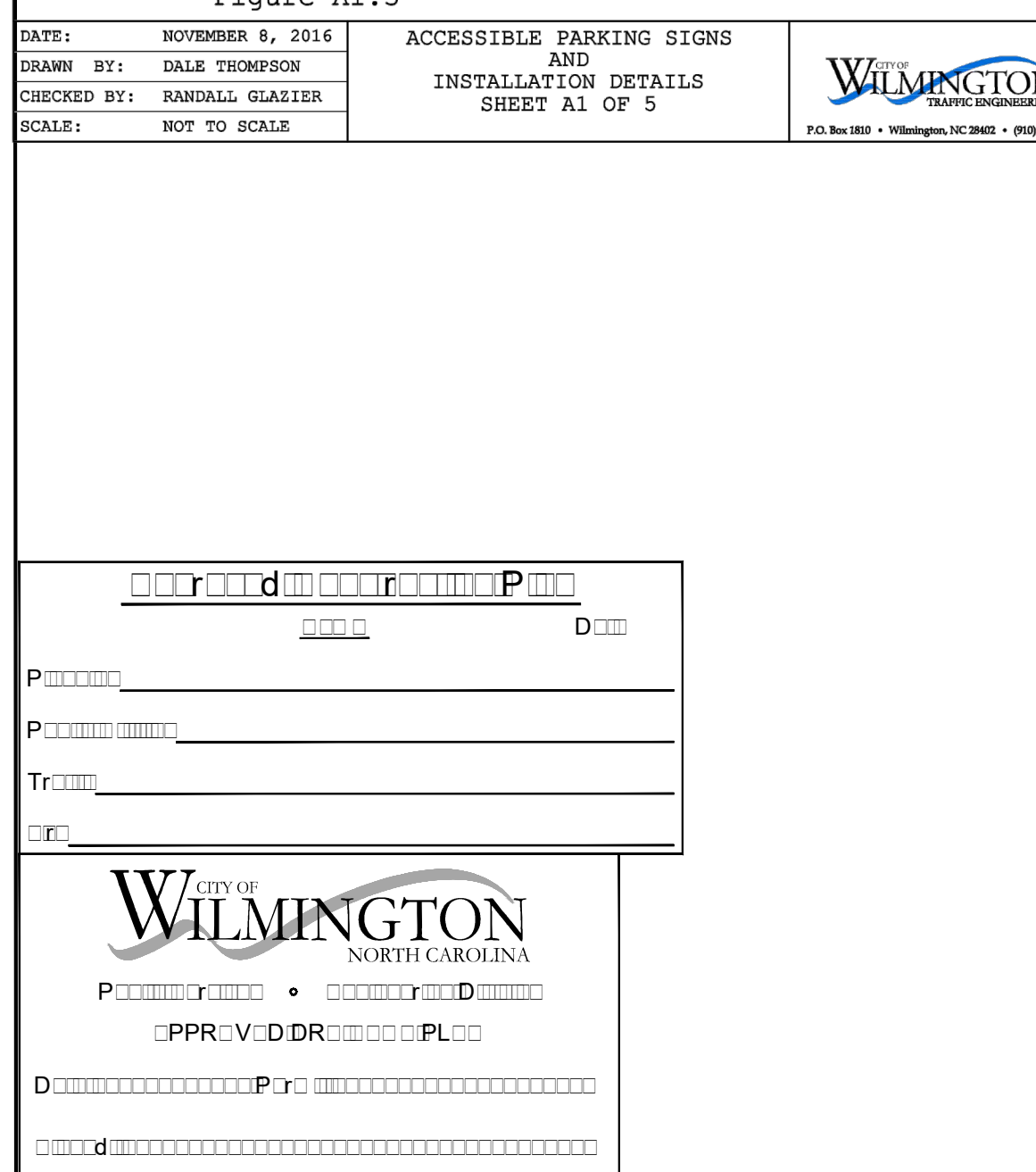
NO.	DATE	DESCRIPTION

INTRACOASTAL ENGINEERING, PLLC
5725 Oleander Dr. Unit E-7
Wilmington, North Carolina 28403
Phone: 910.859.8983
Email: Charlie@intracoastalengineering.com
License Number: P-0662



ROADWAY STANDARD DRAWING FOR CONCRETE JUNCTION BOX
(WITH OPTIONAL MANHOLE)
FOR USE WITH STD. DIM'S 840.14 AND 840.15

DIMENSIONS OF BOX AND PIPE		REINFORCEMENT BARS		CONCRETE VOLUMES		TOTAL QUANTITIES		INDUCTIVE FOR BOX					
PIPE	SPAN	WIDTH	HEIGHT	NO.	LENGTH	E	F	TOP SLAB	BOTTOM SLAB	WALL	INSIDE	PIPE	INSIDE
D	A	B	H	NO.	E	F	NO.	CU. YDS.	CU. YDS.	CU. YDS.	CU. YDS.	C.S.	R.C.
12"	2'-0"	2'-0"	2'-0"	12	2'-0"	1'-0"	187	0.187	0.185	22	0.750	0.018	0.024
15"	2'-3"	2'-3"	2'-3"	12	3'-0"	3'-0"	371	0.198	0.204	24	0.902	0.033	0.038
18"	2'-6"	2'-6"	2'-6"	14	3'-0"	3'-0"	527	0.227	0.227	30	1.086	0.033	0.040
24"	3'-0"	3'-0"	3'-0"	16	3'-0"	4'-0"	678	0.296	0.296	36	1.434	0.058	0.068
30"	3'-6"	3'-6"	3'-6"	18	4'-3"	4'-6"	875	0.375	0.375	51	1.860	0.092	0.127
36"	4'-0"	4'-0"	4'-0"	20	4'-0"	5'-0"	1108	0.468	0.468	64	2.341	0.122	0.178
42"	4'-6"	4'-6"	4'-6"	22	5'-0"	5'-6"	1380	0.560	0.560	77	2.878	0.160	0.243
48"	5'-0"	5'-0"	5'-0"	26	6'-3"	6'-4"	1743	0.743	0.743	111	3.620	0.235	0.317
54"	5'-6"	5'-6"	5'-6"	28	6'-0"	6'-10"	2080	0.860	0.860	128	4.280	0.287	0.401
60"	6'-0"	6'-0"	6'-0"	30	7'-3"	7'-4"	2484	1.044	1.044	145	5.080	0.367	0.495
66"	7'-0"	7'-0"	7'-0"	32	7'-10"	8'-1"	2918	1.210	1.210	169	6.017	0.444	0.589

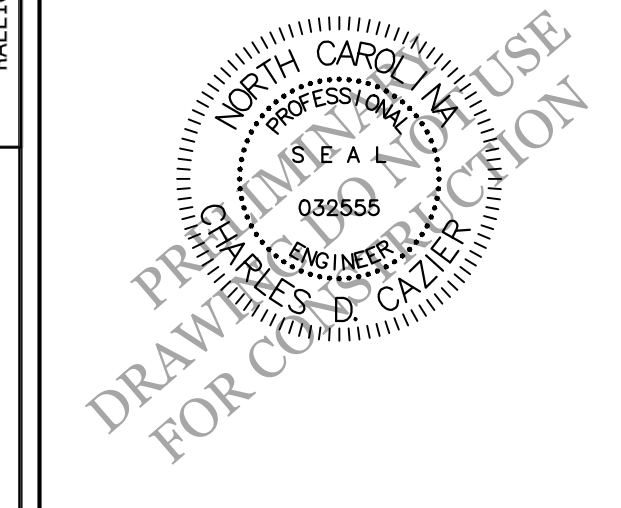


ROADWAY STANDARD DRAWING FOR CONCRETE JUNCTION BOX
(WITH OPTIONAL MANHOLE)
FOR USE WITH STD. DIM'S 840.14 AND 840.15

DIMENSIONS OF BOX AND PIPE		REINFORCEMENT BARS		CONCRETE VOLUMES		TOTAL QUANTITIES		INDUCTIVE FOR BOX					
PIPE	SPAN	WIDTH	HEIGHT	NO.	LENGTH	E	F	TOP SLAB	BOTTOM SLAB	WALL	INSIDE	PIPE	INSIDE
D	A	B	H	NO.	E	F	NO.	CU. YDS.	CU. YDS.	CU. YDS.	CU. YDS.	C.S.	R.C.
12"	2'-0"	2'-0"	2'-0"	12	2'-0"	1'-0"	187	0.187	0.185	22	0.750	0.018	0.024
15"	2'-3"	2'-3"	2'-3"	12	3'-0"	3'-0"	371	0.198	0.204	24	0.902	0.033	0.038
18"	2'-6"	2'-6"	2'-6"	14	3'-0"	3'-0"	527	0.227	0.227	30	1.086	0.033	0.040
24"	3'-0"	3'-0"	3'-0"	16	3'-0"	4'-0"	678	0.296	0.296	36	1.434	0.058	0.068
30"	3'-6"	3'-6"	3'-6"	18	4'-3"	4'-6"	875	0.375	0.375	51	1.860	0.092	0.127
36"	4'-0"	4'-0"	4'-0"	20	4'-0"	5'-0"	1108	0.468	0.468	64	2.341	0.122	0.178
42"	4'-6"	4'-6"	4'-6"	22	5'-0"	5'-6"	1380	0.560	0.560	77	2.878	0.160	0.243
48"	5'-0"	5'-0"	5'-0"	26	6'-3"	6'-4"	1743	0.743	0.743	111	3.620	0.235	0.317
54"	5'-6"	5'-6"	5'-6"	28	6'-0"	6'-10"	2080	0.860	0.860	128	4.280	0.287	0.401
60"	6'-0"	6'-0"	6'-0"	30	7'-3"	7'-4"	2484	1.044	1.044	145	5.080	0.367	0.495
66"	7'-0"	7'-0"	7'-0"	32	7'-10"	8'-1"	2918	1.210	1.210	169	6.017	0.444	0.589

DETAILS

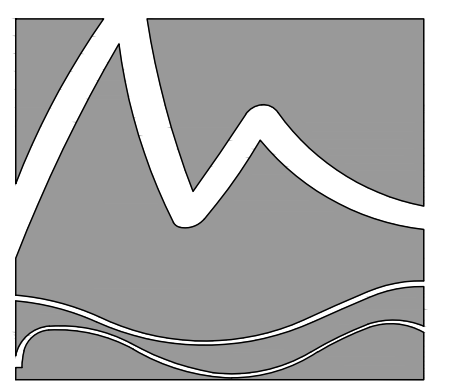
FOR
FRANKLIN FOREST PHASE-II
4912 Franklin Ave. & 202 Lullwater Dr.
CITY OF WILMINGTON
NEW HANOVER COUNTY, NC



CLIENT INFORMATION:
Ritz Partners 3, LLC.
Matt Scharf
1319-CC Military Cutoff Rd #172
Wilmington, NC 28405
Ph. 910-538-9901

DRAWING NUMBER: C-3

DATE: 2/8/2021
SHEET SIZE: 24x36
SCALE: NTS
PROJECT NUMBER: 2020-025



MIHALY
LAND DESIGN
PLANNING + LANDSCAPE ARCHITECTURE
330 MILITARY CUTOFF RD., Suite A3
Wilmington, NC 28405 910.392.4355

Revisions
2021-02-15: Revised per COW
Comments

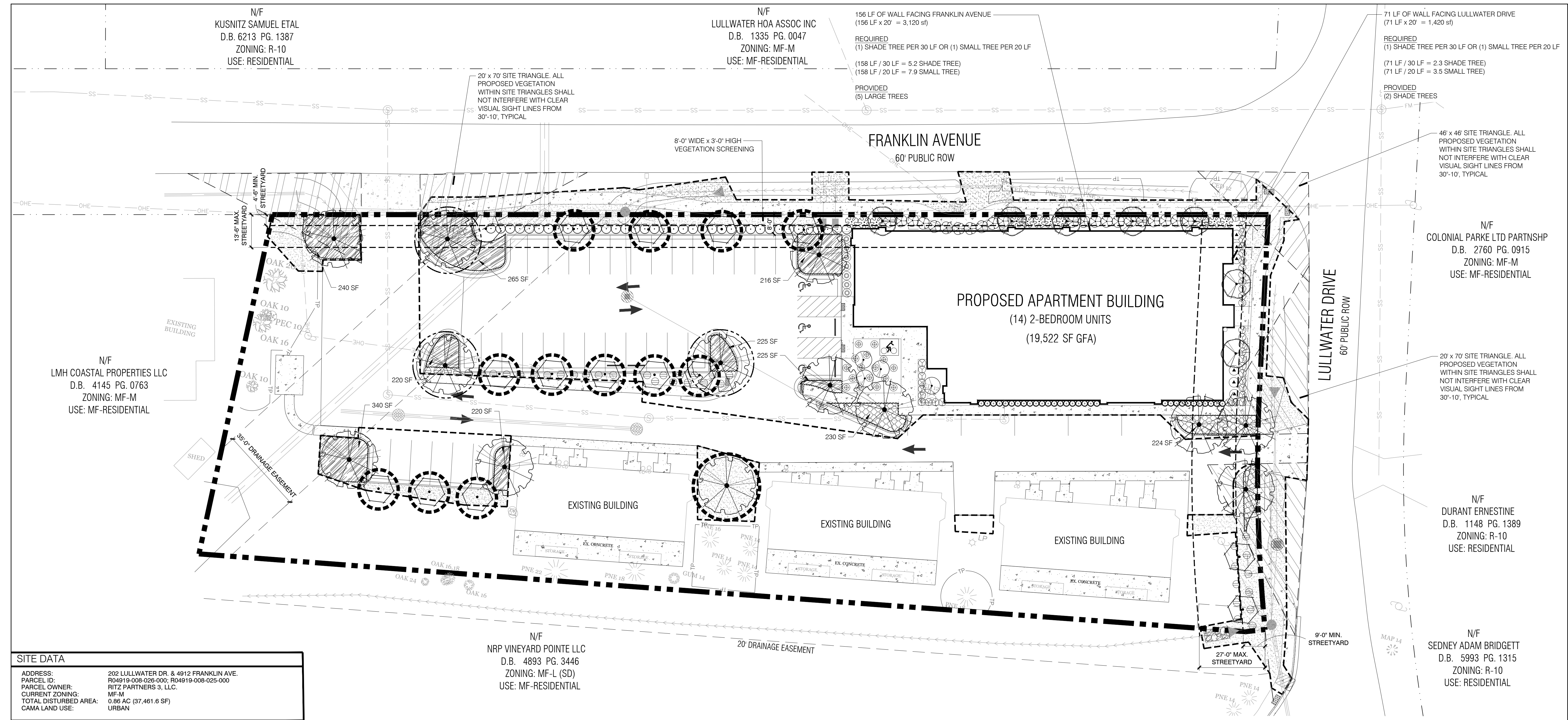
CLIENT
RITZ PARTNERS 3, LLC.
FRANKLIN FOREST
4912 FRANKLIN AVE. & 202 LULLWATER DR. 1319-CC MILITARY CUTOFF RD # 172
WILMINGTON, NC
PHONE: 910-538-9901

PROJECT
FRANKLIN FOREST
4912 FRANKLIN AVE. & 202 LULLWATER DR. 1319-CC MILITARY CUTOFF RD # 172
WILMINGTON, NC
LANDSCAPE PLAN

PERMIT PLAN

Date: 2020-11-30
Phase:
Job Number: 101-731
Designed by: MLD
Drawn by: RJB
Checked by: JWM
Sheet Title: PLANTING PLAN

Sheet Number:
L1.0
of 1 sheets



SITE DATA

ADDRESS:	202 LULLWATER DR. & 4912 FRANKLIN AVE.
PARCEL ID:	R04919-008-028-000; R04919-008-025-000
PARCEL OWNER:	RITZ PARTNERS 3, LLC.
CURRENT ZONING:	MF-M
TOTAL DISTURBED AREA:	0.86 AC (37,461.6 SF)
CAMA LAND USE:	URBAN

LANDSCAPE REQUIREMENTS

REQUIRED	PROVIDED
PARKING LOT CANOPY COVERAGE (9,870 SF x 20%)	3 LARGE TREES, (707' x 3 = 2,121 SF)
STREET YARD PLANTING PRIMARY STREETYARD: MULTIPLIER 18 (9' MIN. & 27' MAX. WIDTH)	
LULLWATER DR.	170.85 LF - 15 LF (DRIVEWAYS) = 155.85 x 18 2,825 SF REQUIRED
TREES REQUIRED	5 (1/600 SF)
SHRUBS REQUIRED	28 (8/600 SF)
5 PROPOSED CANOPY TREES	
48 PROPOSED SHRUBS	
SECONDARY STREETYARD: MULTIPLIER 9 (4.5' MIN. & 13.5' MAX. WIDTH)	
FRANKLIN AVE.	405.44 LF - 24.6 LF (DRIVEWAYS) = 384.84 x 9 3,464 SF REQUIRED
TREES REQUIRED	6 (1/600 SF)
SHRUBS REQUIRED	35 (8/600 SF)
6 PROPOSED CANOPY TREES	
71 PROPOSED SHRUBS	
FOUNDATION PLANTING 12% FACADE AREA	
BUILDING #1	168 SF (70 LF x 20' HT x 12)
WEST	365 SF (152 LF x 20' HT x 12)
SOUTH	200 SF
	370 SF

RETAINED TREES COUNTED TOWARD OVERALL TREE REQUIREMENTS

QUANTITY	SIZE	COMMON NAME	% MITIGATION
1	12"	CEDAR	100
2	24"	OAK	100
TOTAL CREDIT = 3			

TREE MITIGATION REQUIREMENTS

REMOVED SIGNIFICANT TREES

QUANTITY	SIZE	COMMON NAME	% MITIGATION
1	24"	OAK	100
TOTAL: 16 TREES REQUIRED FOR MITIGATION			

***REMOVED REGULATED TREES ARE ALL ESSENTIAL SITE IMPROVEMENTS**

TOTAL TREES REQUIRED FOR MITIGATION = 16 TREES
TOTAL RETAINED TREE CREDITS = 3 CREDITS
TREES PLANTED TO MEET MITIGATION = 13

TREE REQUIREMENTS PER DISTURBED ACRE

15 TREES PER DISTURBED ACRE MUST BE RETAINED OR PLANTED ON SITE.

REQUIRED:	0.86 ACRES DISTURBED x 15 TREES = 13 TREES REQUIRED
PROVIDED:	33 TREES PLANTED - REFER TO PLANTING LEGEND
TOTAL:	33 TREES PROVIDED

For each open utility cut of City streets, a \$325 permit shall be required from the City prior to occupancy and/or project acceptance.

Approved Construction Plan

Name	Date
Planning	
Public Utilities	
Traffic	
Fire	

APPROVED STORMWATER MANAGEMENT PLAN

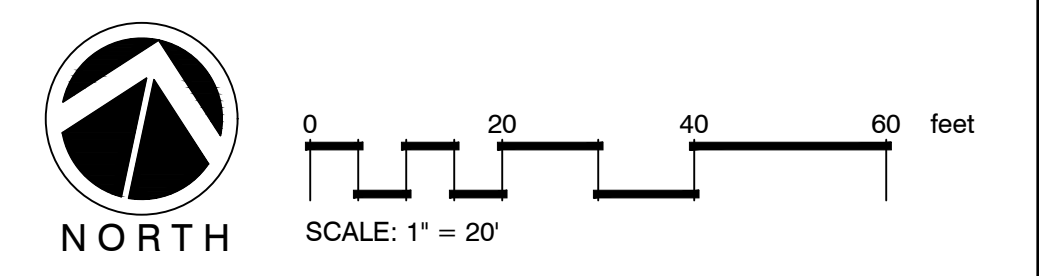
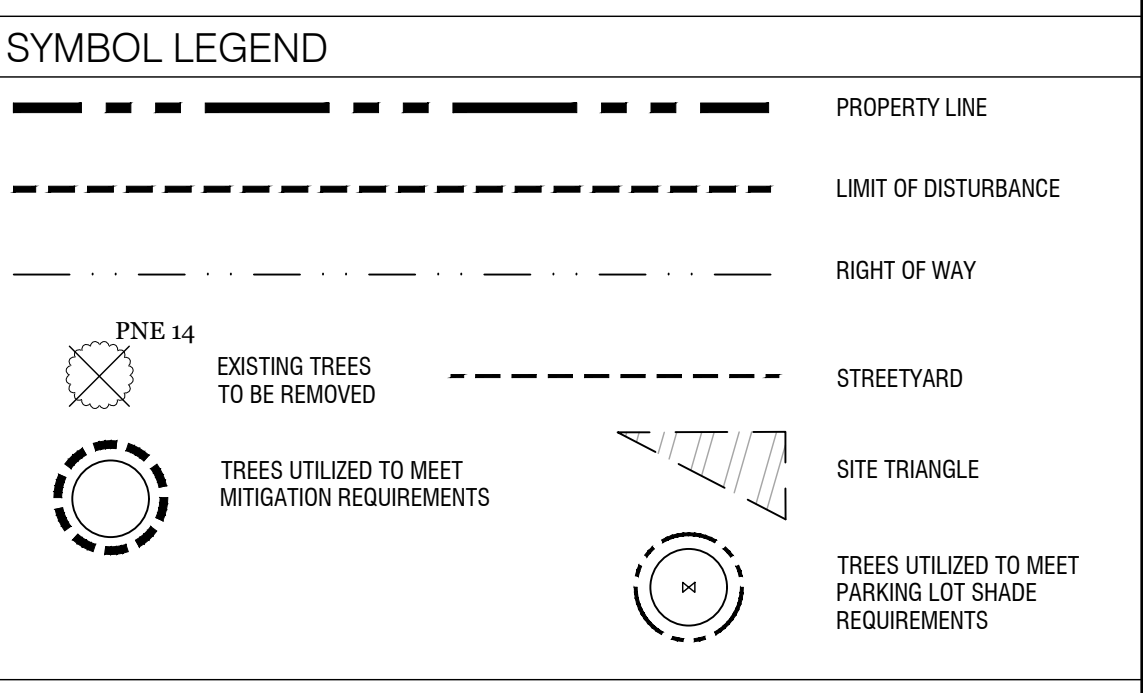
City of Wilmington
Public Services • Engineering Division

Date: _____ Permit # _____
Signed: _____

- GENERAL PLANTING NOTES**
- THIS WORK INCLUDES, BUT IS NOT LIMITED TO THE FURNISHING OF ALL LABOR, MATERIALS, EQUIPMENT, FINAL GRADING, SEEDING, SOIL AMENDMENTS, ETC., AS MAY BE REQUIRED FOR A COMPLETE INSTALLATION.
 - QUANTITIES SHOWN IN PLANT LISTS ARE FOR CONVENIENCE ONLY. PLANS SHALL GOVERN.
 - THE LANDSCAPE CONTRACTOR SHALL NOTIFY THE LANDSCAPE ARCHITECT OF ANY DISCREPANCIES IN PLANT LOCATIONS OR INSUFFICIENT PLANT QUANTITIES DUE TO DIFFERENCES IN PLAN AND ACTUAL FIELD CONDITIONS.
 - ALL TREE AND SHRUB MATERIAL SPECIFIED MUST MEET STANDARD INDUSTRY SPECIFICATIONS FOR THE CONTAINER SIZE INDICATED. DOWNSIZING OR SUBSTITUTION OF PLANT MATERIAL WITHOUT PRIOR APPROVAL OF LANDSCAPE ARCHITECT WILL NOT BE ALLOWED.
 - ALL LANDSCAPE AREAS SHALL BE GRADED TO A SMOOTH EVEN SURFACE PRIOR TO ANY PLANT INSTALLATION. ALL PLANT MATERIALS SHALL BE INSTALLED USING GOOD HORTICULTURAL PRACTICES IN ACCORDANCE WITH THE PLANS AND DETAILS. TREES SHALL NOT BE PLANTED CLOSER THAN FOUR (4) FEET FROM ANY WALKWAY OR PUBLIC SIDEWALK EXCEPT WHERE TREE WELLS OR PARKWAYS ARE PROVIDED IN THE SIDEWALK AREA. ALL TREE PLANTED WITHIN FIVE (5) FEET OF WALKS OR PUBLIC UTILITIES SHALL RECEIVE DEEP ROOT BARRIERS.
 - TREE LOCATIONS SHOWN ON PLAN MAY REQUIRE ADJUSTMENT IN THE FIELD, WHENEVER FEASIBLE. TREES SHOULD BE PLANTED A MINIMUM OF TEN (10) FEET FROM ALL UNDERGROUND UTILITIES, STREETLIGHTS, HYDRANTS, AND OUT OF DRAINAGE FLOW LINES. SHOULD THIS NOT BE POSSIBLE, CONTACT THE LANDSCAPE ARCHITECT FOR DECISION ON PLACEMENT.
 - ALL TREES IN TURF AREAS SHALL HAVE 12" MIN. CLR. CIRCUMFERENCE AROUND THE TRUNK BASE. PROVIDE 2" MIN. THK. MULCH AT BASE OF TRUNK.
 - GROUND COVER TYPE SHOWN SHALL BE PLANTED IN ALL SHRUB AREAS AS SPECIFIED ON PLANS. GROUND COVER SHALL BE PLANTED AT 8" ON-CENTER UNIFORM TRIANGULAR SPACING, AND SHALL BE CONTINUOUS UNDER ALL TREE AND SHRUB MASSES AS SHOWN ON PLAN.
 - MATURE PLANTINGS SHALL NOT INTERFERE WITH UTILITIES AND TRAFFIC SIGHT LINES.
 - ALL PLANTING AREAS SHALL BE MULCHED WITH PINESTRAW, EXCEPT FOR AREAS PLANTED WITH GROUND COVER. ALL AREAS PLANTED WITH GROUND COVER SHALL BE MULCHED WITH HARDWOOD MULCH.

PLANT SCHEDULE

TREES	BOTANICAL / COMMON NAME	CONT	MIN. REQ. SIZE	QTY
	Cecis c. Forest Parasy / TM / Forest Parasy Redbud	8&B	2-2.5' CAL.	7
	Hex x.s. East Palatka / Single Stem East Palatka Holly	8&B	2-2.5' CAL.	15
	Quercus virginiana / Southern Live Oak	8 & B	2-2.5' CAL.	13
SHRUBS	BOTANICAL / COMMON NAME	CONT	MIN. REQ. SIZE	QTY
	Aucuba l. Gold Dust / Gold Dust Aucuba	7 gal	12" HT	22
	Fatsia japonica / Japanese Fatsia	7 gal	12" HT	11
	Hydrangea p. Limelight / TM / Limelight Hydrangea	3 gal	12" HT	6
	Hex vomitoria / Nana / Dwarf Yaupon	3 gal	12" HT	37
	Ligustrum l. Recurvifolium / Wax leaf Ligustrum	7 gal	3' HT	38
	Ligustrum japonicum / Tree Form Ligustrum	8&B		4
	Miscanthus s. Adagio / Adagio Bulata Grass	3 gal		38
	Nandina domestica / Heavenly Bamboo	3 gal		7
	Nandina domestica / Firepower / Firepower Heavenly Bamboo	3 gal		16
	Podocarpus macrophyllum / Dwarf Pringles / Dwarf Podocarpus	7 gal		31
GROUND COVERS	BOTANICAL / COMMON NAME	CONT	SPACING	QTY
	Liriope gigantea / Giant Liriope	1 GAL	24" o.c.	522
	Trachelospermum s. Asiatic / Asiatic Jasmine	1 qt	12" o.c.	577
SOIL/SEED	BOTANICAL / COMMON NAME	CONT	SPACING	QTY
	Eriochloa ophiuroides / Centipede Sod	sod		



*NOTE: PRIOR TO ANY CLEARING, GRADING, OR CONSTRUCTION ACTIVITY, TREE PROTECTION FENCING WILL BE INSTALLED AROUND PROTECTED TREES OR GROVES OF TREES. NO CONSTRUCTION WORKERS, TOOLS, MATERIALS OR VEHICLES ARE PERMITTED WITHIN THE TREE PROTECTION FENCING